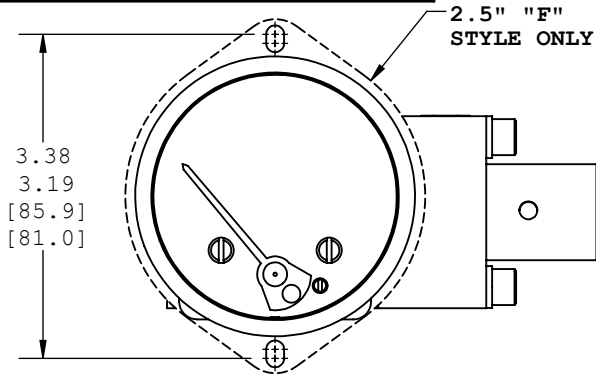
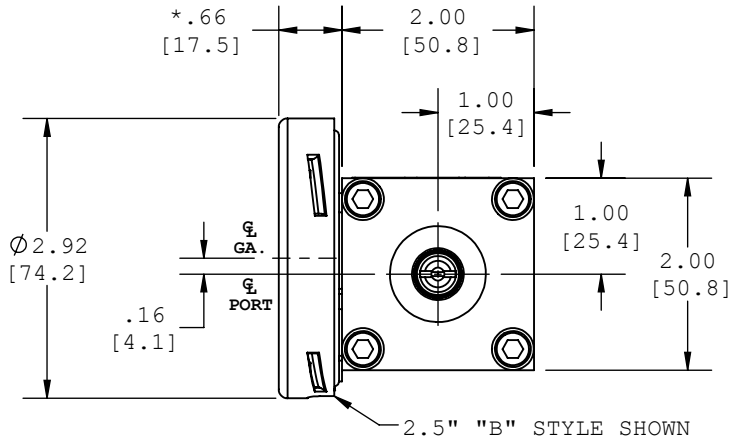


MODELS:

- 1516DG-1()-2.5B & 2.5F
 - 1516DG-4()-2.5B & 2.5F
 - 1516DG-5()-2.5B & 2.5F
- (2.5" B & F-STYLE GAUGE CASES)

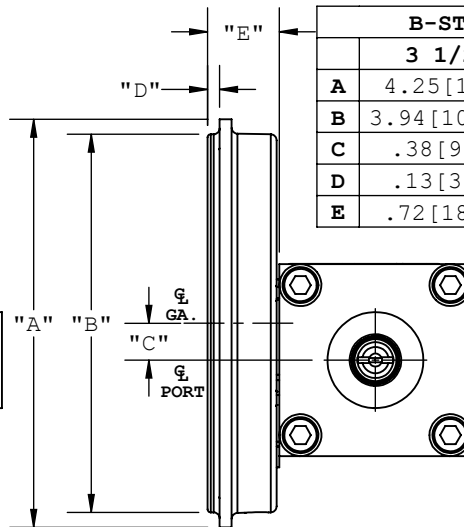
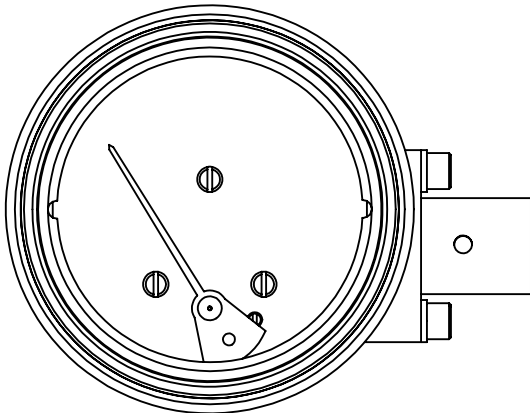


*.75 [19.1] F-STYLE GA. CASE



MODELS:

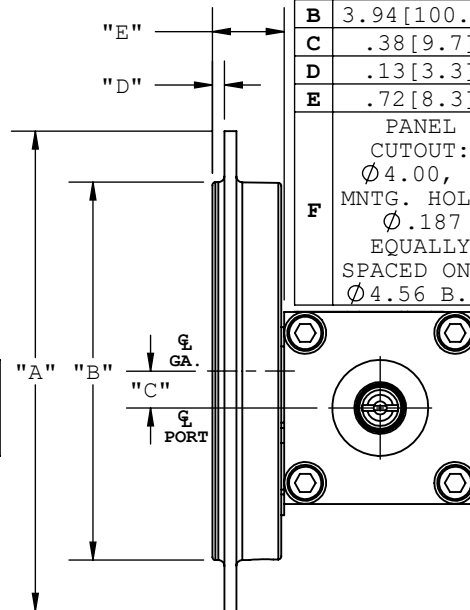
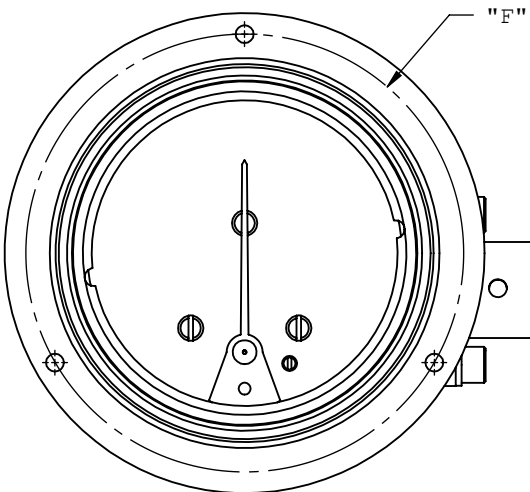
- 1516DG-1()-() B
 - 1516DG-4()-() B
 - 1516DG-5()-() B
- (3.5", 4.5" & 6.0" B-STYLE GAUGE CASES)



B-STYLE GA. CASE DIMENSIONS			
	3 1/2"	4 1/2"	6.0"
A	4.25 [108]	5.25 [133.4]	6.40 [162.6]
B	3.94 [100.1]	4.94 [125.5]	5.89 [149.6]
C	.38 [9.7]	.75 [19.1]	1.48 [37.6]
D	.13 [3.3]	.13 [3.3]	.39 [9.9]
E	.72 [18.3]	.72 [18.3]	.85 [21.6]

MODELS:

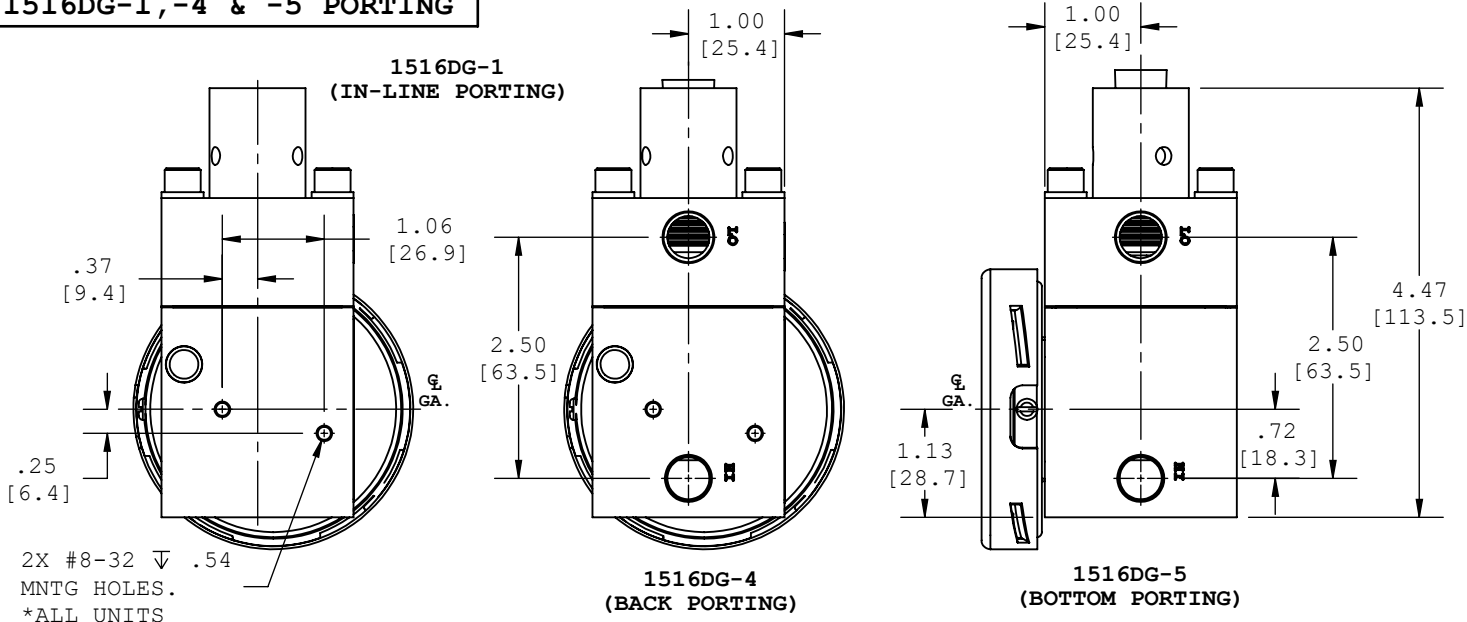
- 1516DG-1()-() F
 - 1516DG-4()-() F
 - 1516DG-5()-() F
- (3.5", 4.5" & 6.0" F-STYLE GAUGE CASES)



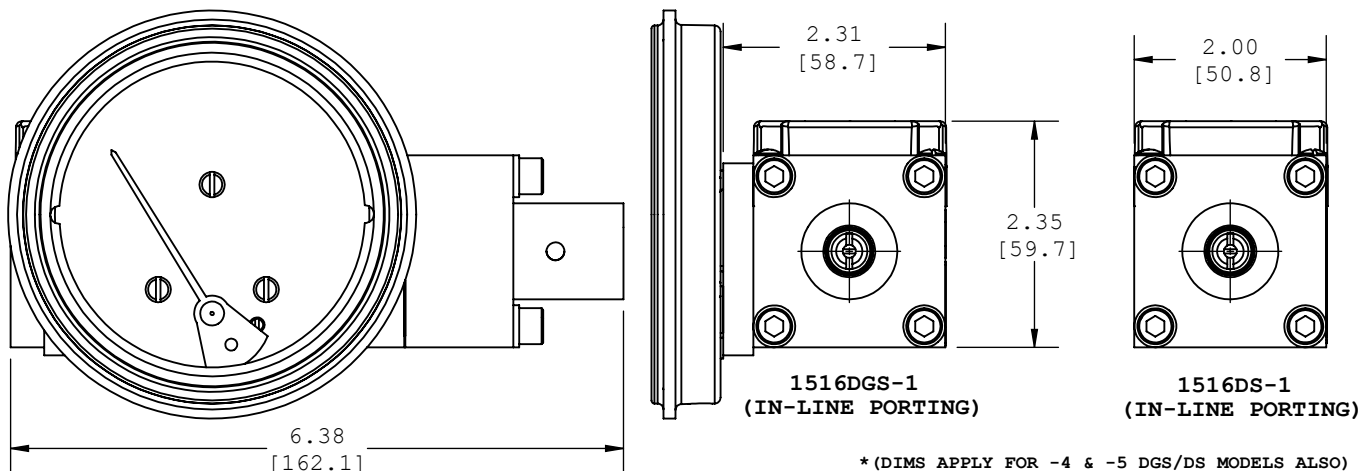
F-STYLE GA. CASE DIMENSIONS			
	3 1/2"	4 1/2"	6.0"
A	5.00 [127]	6.00 [152.4]	7.62 [193.5]
B	3.94 [100.1]	4.94 [125.5]	6.40 [162.6]
C	.38 [9.7]	.75 [19.1]	1.48 [37.6]
D	.13 [3.3]	.13 [3.3]	.39 [9.9]
E	.72 [8.3]	.72 [8.3]	.85 [21.6]
F	PANEL CUTOUT: Ø4.00, 3 MNTG. HOLES Ø .187 EQUALLY SPACED ON A Ø4.56 B.C.	PANEL CUTOUT: Ø5.00, 3 MNTG. HOLES Ø .218 EQUALLY SPACED ON A Ø5.38 B.C.	PANEL CUTOUT: Ø6.50, 3 MNTG. HOLES Ø .218 EQUALLY SPACED ON A Ø7.00 B.C.

1516 SERIES

1516DG-1,-4 & -5 PORTING



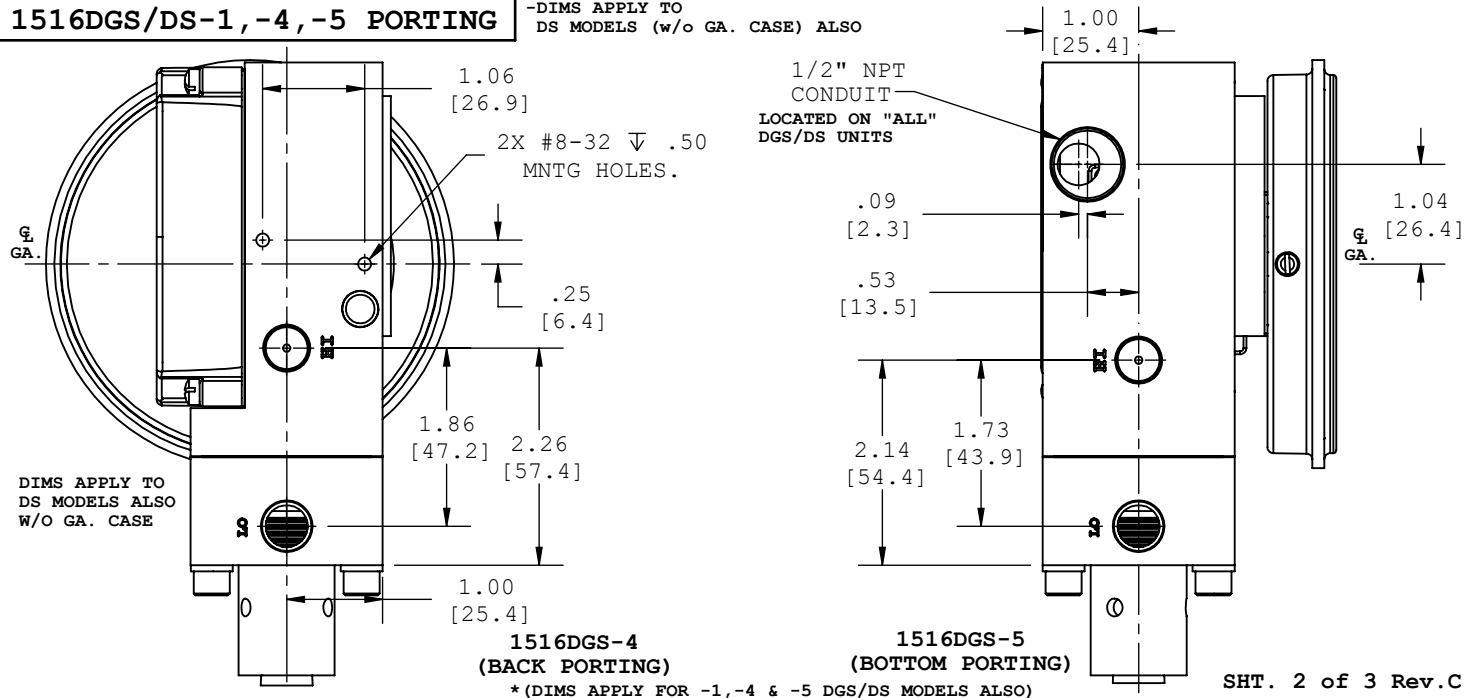
1516DGS/DS-1,-4 & -5 MODELS



* (DIMS APPLY FOR -4 & -5 DGS/DS MODELS ALSO)

1516DGS/DS-1,-4,-5 PORTING

-DIMS APPLY TO DS MODELS (w/o GA. CASE) ALSO



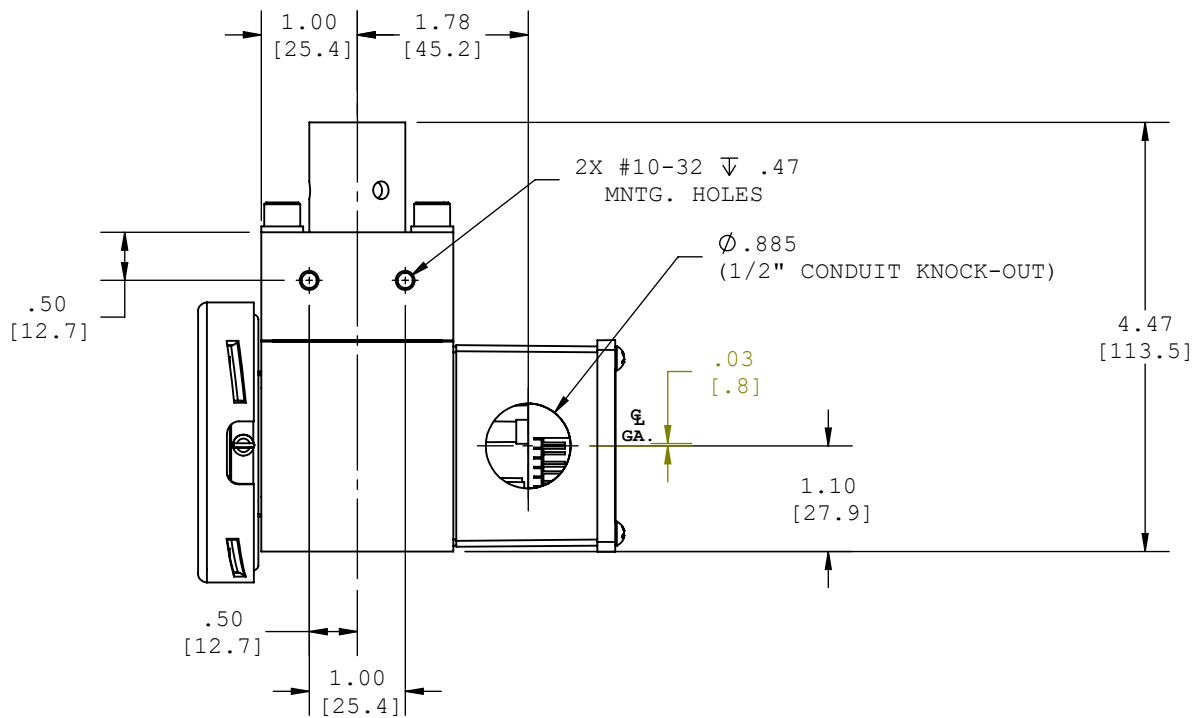
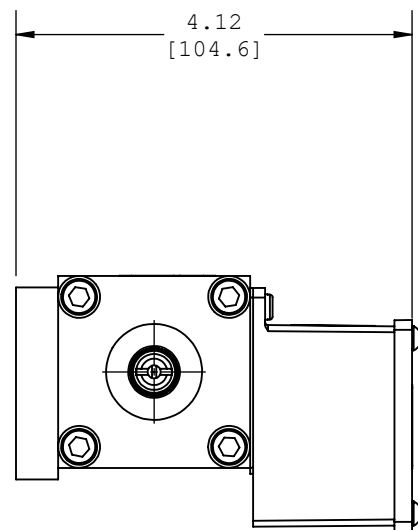
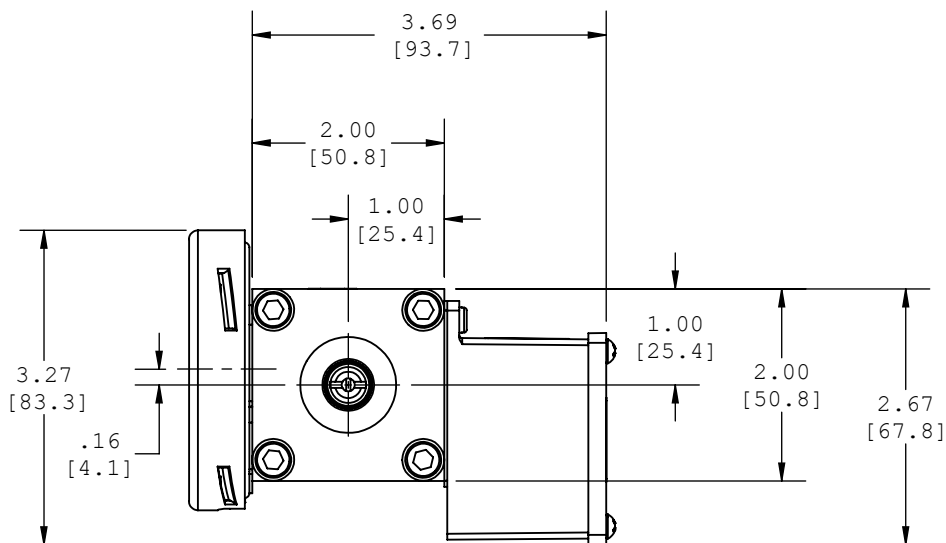
* (DIMS APPLY FOR -1,-4 & -5 DGS/DS MODELS ALSO)

1516 SERIES

1516DGT/DT-1 MODELS

1516DGT-1()-2.5B-T2 SHOWN

1516DT-1()-T2 SHOWN



(DIMS APPLY TO 1516DT ALSO)

SEE SHEET 1 FOR DIAL SIZES OTHER THAN 2.5" B-STYLE